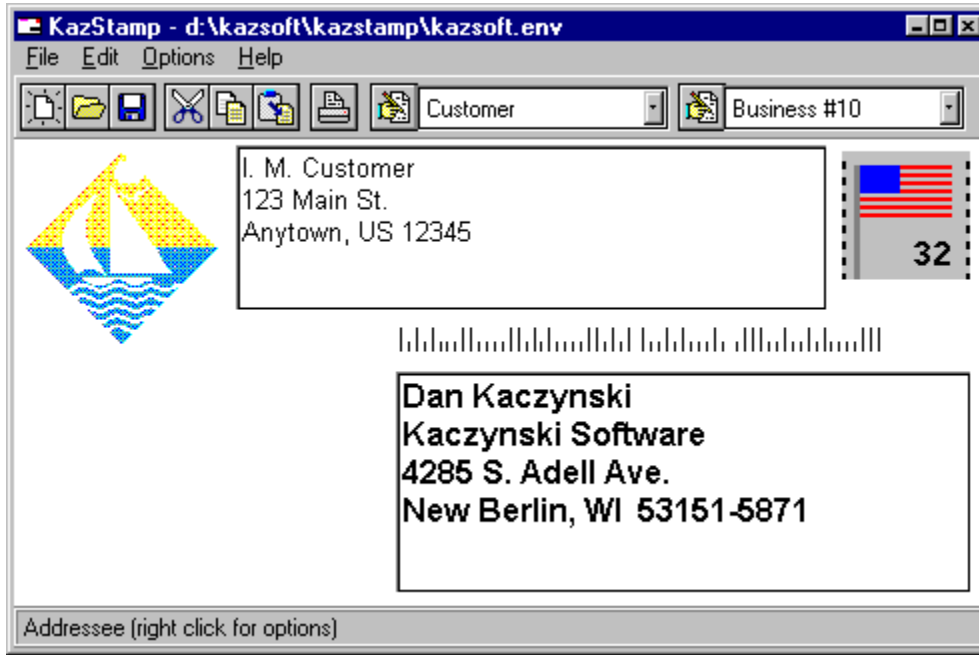


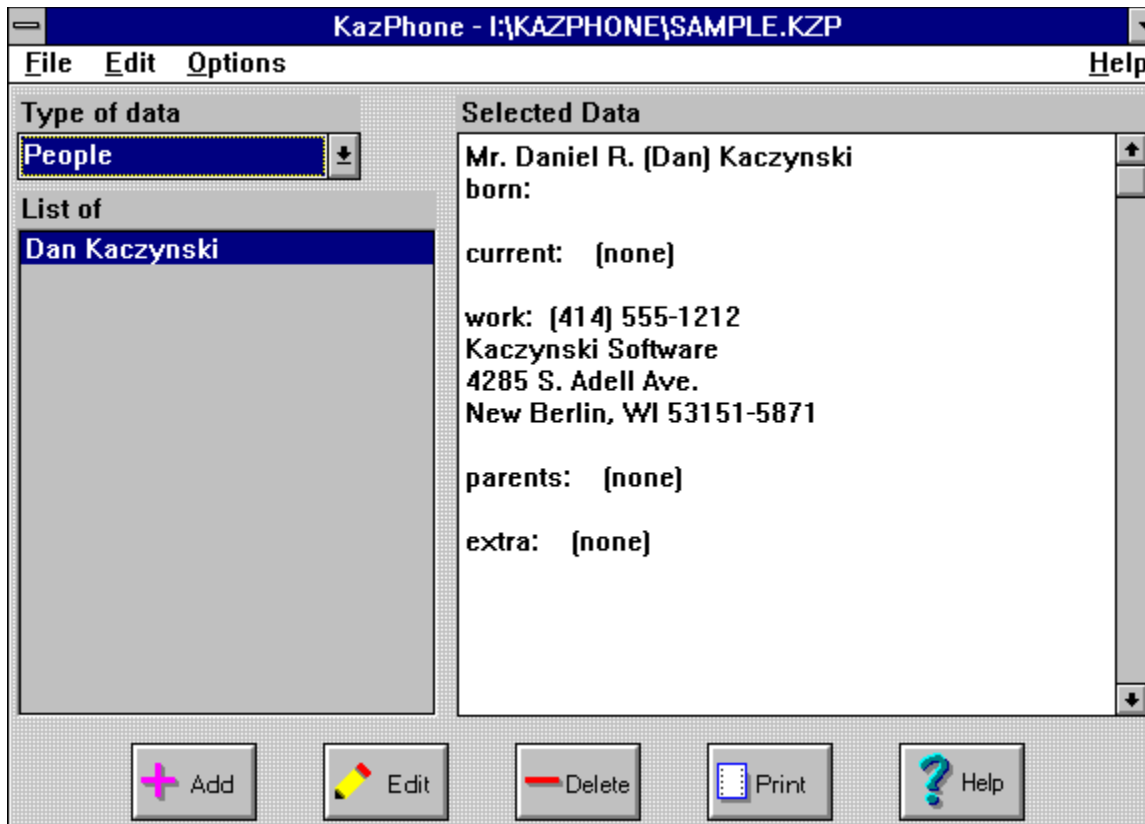


Kaczynski Software Products

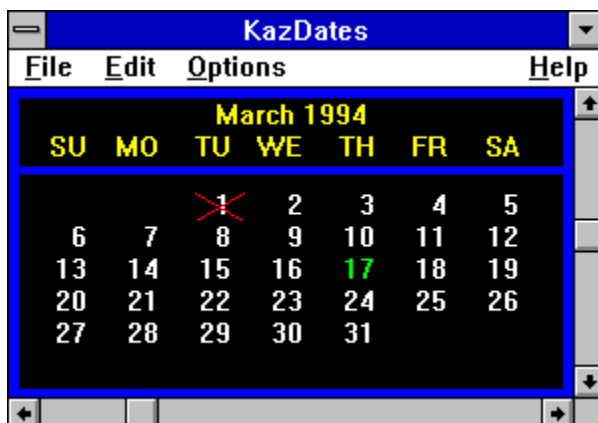
These are some of the programs available from [Kaczynski Software](#):



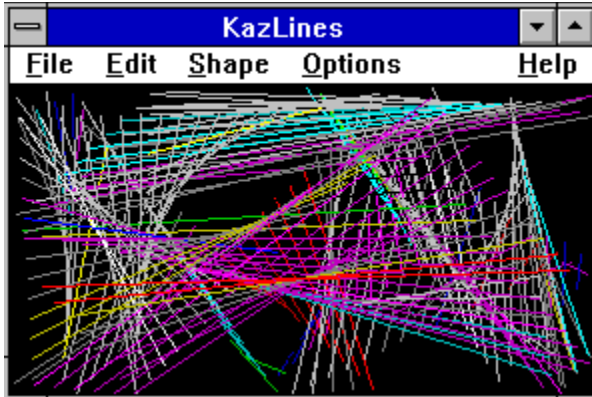
KazStamp makes it easy to print envelopes (including a return address, bitmap, and post office bar code) from a text file or any Windows word processor. The font and print area can be customized to fit any envelope.



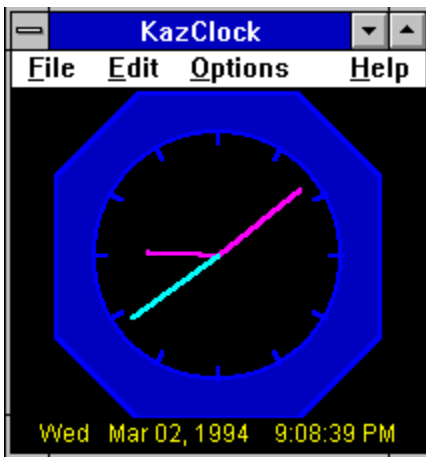
KazPhone makes it easy to maintain a personal phone book and use it to print envelopes customized with color, fonts, a return address, bitmap, and post office bar code. The program also keeps track of birthdays and anniversaries and can print a personal phone book.



KazDates provides a monthly calendar with scroll bars to easily change the month and year. Most of the display attributes can be customized.



KazLines creates an image that continuously changes shape, size, and color. Different images can be created by selecting one of nine different shapes and changing the line and color characteristics.



KazClock provides an on screen clock with the ability to customize all colors. A built in alarm reminds you about important events.



Technical Support

Technical support is available by mail or Internet e-mail for at least one year beyond the release date of the product, or three months after you register your copy, whichever is longer. Please contact Kaczynski Software via e-mail or mail at the addresses shown below with any questions, problems, or suggestions that you may have.

e-mail: Dan_Kaczynski@msn.com

mail: Kaczynski Software
4285 S. Adell Ave.
New Berlin, WI 53151-5871



Disclaimer of Warranty

This software and documentation are provided "**as is**" and without warranties as to performance, merchantability, fitness for particular purpose, or any other warranties whether expressed or implied. The user assumes the entire risk of using this program. In no event will liability for any damages ever exceed the registration fee paid for the license to use the software, regardless of any form of the claim.

See Also

[License Agreement](#)

[Registration](#)



License Agreement

Evaluation Version

This is not free software. This software and documentation is owned and copyrighted by Daniel R. Kaczynski and **Kaczynski Software**. You may use the software and documentation for evaluation purposes for up to 21 days without cost or obligation. After these 21 days, you must register the software if you continue to use it.

Registered Version

After the registration fee has been paid to **Kaczynski Software**, one registered copy of the program may either be used by a single person who uses the software personally on one or more computers, or installed on a single workstation used nonsimultaneously by multiple people, but not both. You may access the registered version of the program through a network, provided that you have obtained individual licenses for the software covering all workstations that will access the software through the network.

See Also

[Registration](#)

[Disclaimer of Warranty](#)

Print Registration Form Command (File Menu)

Use this command to print a copy of the registration form.

See Also

[Registration](#)

[Registration Command](#)

[Registration Dialog Box](#)

Register Command (File Menu)

Use this command to register your copy of the program with the [Registration Dialog Box](#).

See Also

[Registration](#)

[Registration Dialog Box](#)

[Print Registration Form](#)

Exit Command (File Menu)

Use this command to save the current configuration and stop the program.

Print Setup Command (File Menu)

Use this command to modify the current printer settings.

OK Button

Use this button to accept the entries made in the dialog box.

Cancel Button

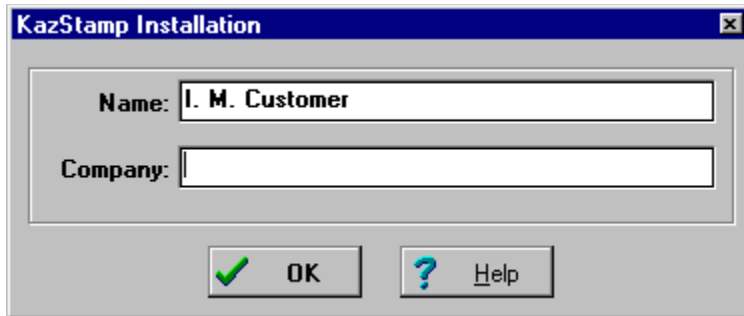
Use this button to close the dialog box without saving any changes.

Help Button

Use this button to display this help page.

Installation Dialog Box

The following dialog box appears when the program runs for the first time. Click on any field for additional help.

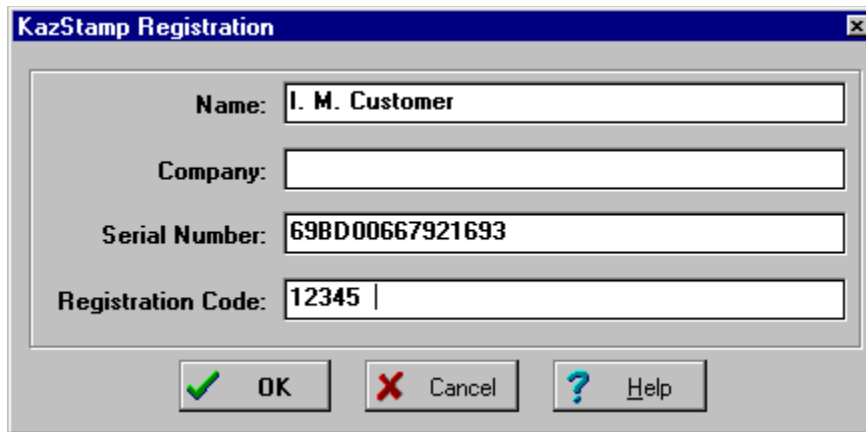
A screenshot of a Windows-style dialog box titled "KazStamp Installation". The dialog box has a blue title bar with a close button (X) in the top right corner. Inside the dialog, there are two text input fields. The first field is labeled "Name:" and contains the text "I. M. Customer". The second field is labeled "Company:" and is currently empty. At the bottom of the dialog, there are two buttons: "OK" with a green checkmark icon to its left, and "Help" with a blue question mark icon to its left.

Enter your name and (optionally) your company name. When the information is correct, push the OK button. Your copy of the program will be personalized with the information you provided.

See Also
[Registration](#)

Registration Dialog Box

The following dialog box appears when the Register Command is used. Click on any field for additional help.



The image shows a Windows-style dialog box titled "KazStamp Registration". It contains four text input fields: "Name" with the text "I. M. Customer", "Company" which is empty, "Serial Number" with the text "69BD00667921693", and "Registration Code" with the text "12345". At the bottom of the dialog box are three buttons: "OK" with a green checkmark icon, "Cancel" with a red X icon, and "Help" with a blue question mark icon.

Enter your name and (optionally) your company name. Check that the serial number matches the one in the registration letter you received from [Kaczynski Software](#), and enter the registration number from the letter. When the information is correct, push the OK button. Your copy of the program is then registered to you. This will remove the one hour limitation of the demonstration version.

If you do not have a registration number, use the Print Registration Form command to request one.

See Also
[Registration](#)
[Registration Command](#)
[Print Registration Form](#)

Name

Enter your name in this box so that your copy of the program can be personalized. This field is required.

Company

Enter your company name in this box so that your copy of the program can be personalized. This field is optional.

Serial Number

This is a unique serial number for your copy of the software. Make sure that this number matches the one in the registration letter from [Kaczynski Software](#).

Registration Number

Enter the registration number provided by [Kaczynski Software](#). If you don't have a registration number, use the [Print Registration Form](#) command to request one.

KazStamp 6.0 Help Contents



[Overview](#)



[Main Window](#)



[Shortcuts](#)



[Post Office Bar Code](#)



[Return Address Graphic](#)



[Setup For Your Printer](#)



[Release Notes](#)



[Registration Information](#)



[Technical Support](#)



[License Agreement](#)



[Disclaimer of Warranty](#)







[Product Information](#)



KazStamp 6.0 Overview

KazStamp is a utility program that makes it easy to print envelopes of any size with the following steps:

- 1) Enter the destination address in the **KazStamp** edit window using any of the methods below:
 - Type the destination address into the editor after using the New command or  button.
 - Load the destination address from a text file or KazStamp file using the Open command or  button.
 - Copy the destination address from the clipboard using the Copy command or  button.
 - Drag a text file or KazStamp file from the File Manager (Windows 3.1) or Explorer (Windows 95) and drop it on **KazStamp**.
 - Double click on a KazStamp file in the File Manager (Windows 3.1) or Explorer (Windows 95).
- 2) Select a return address using the combo box or use the Return Addresses command to create a new return address.
- 3) Select an optional graphic to print to the left of the return address using the Select Graphic command.
- 4) Select the envelope size using the combo box or use the Envelope Sizes command to define a new size.
- 5) Print the envelope using the Print Envelope command or  button.

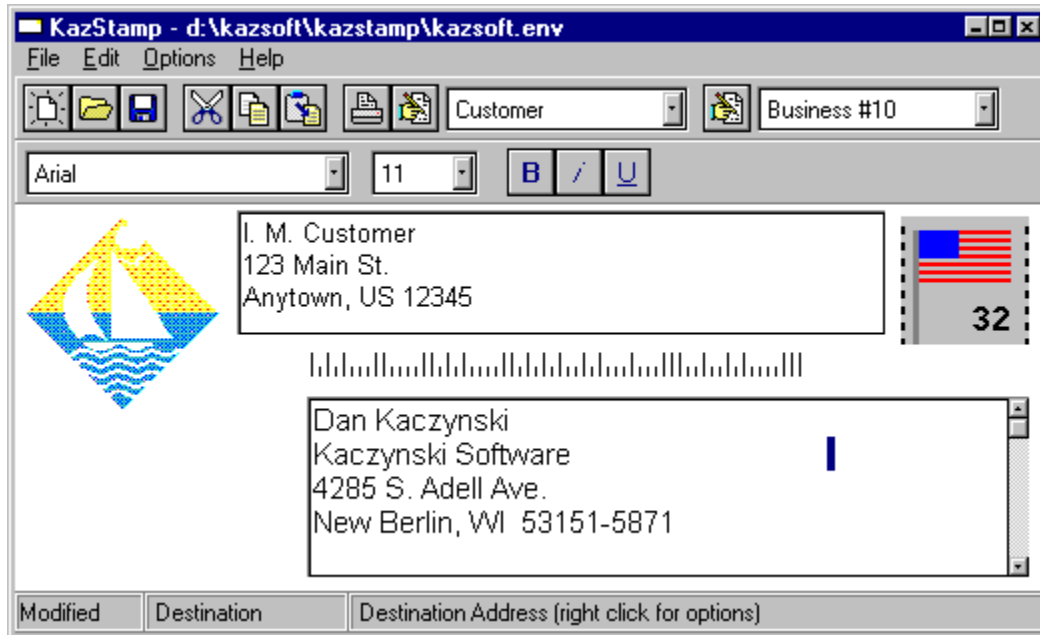
KazStamp is distributed as Shareware. This means that users are encouraged, subject to restrictions described in the License Agreement, to share copies of the **evaluation version** of **KazStamp** with friends, associates, and bulletin boards. Please remember that if you use **KazStamp** beyond the 21 day evaluation period you are required to pay the registration fee of \$5 as described in the section titled Registration.

Related Topics
KazStamp Main Window
Shortcuts
Setup For Your Printer
Release Notes



KazStamp Main Window

Click on any part of the main **KazStamp** window below for more help.

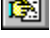


Graphic

This is the Return Address Graphic that was chosen with the Select Graphic command.

Return Address

This is the return address that will be printed on the envelope.

Choose an existing return address using the combo box. Define new return addresses using the  button or the Return Addresses command.

Change the font by right clicking, using the Font Toolbar, or using the Return Address Font command.

Destination Address

This is the destination address that will be printed on the envelope. There are several ways to load the address into this field.

Print Envelope

Click on the stamp to print the envelope.

Bar Code

This is the Postal Bar Code that the Post Office uses to route your letter.

Hint Line

This is a description of the field or command that the cursor is positioned on. Popup help is also available and can be enabled or disabled using the [Show Hints](#) command.

File Modified Indicator

This box contains the word "**Modified**" when the file has been changed without being saved.

Address Indicator

This box contains the words “**Destination**” or “**Return**” to indicate whether the destination or return address is selected. The Edit commands, Main Toolbar, and Font Toolbar all operate on the selected address.

Main Toolbar

The following buttons are available on the main toolbar. Each operates on either the destination or return address, depending on which one is selected.



New File



Open File



Save File



Cut



Copy



Paste



New File

Use this button to open a new address file. If the file currently loaded into the address box has not been saved, you will be prompted to save the file before it is erased.



Open File

Use this button to open an existing address file. If the file currently loaded into the address box has not been saved, you will be prompted to save the file before a new one is opened.



Save File

Use this button to save the address file that is currently loaded.



Cut

Use this button to cut the selected text and save it on the clipboard.



Copy

Use this button to copy the selected text to the clipboard.



Paste

Use this button to paste text from the clipboard into the address window.



Print

Use this button to print an envelope using the current settings.



Define Return Addresses

Use this button to call up the Return Address Definition screen where you can define a list of return addresses.

Select Return Address

Use this combo box to select a return address for the envelope.



Define Envelope Sizes

Use this button to call up the Envelope Size Definition screen where you can define the envelopes you print on.

Select Envelope Size

Use this combo box to select the size of your envelope.

Font Toolbar

The following buttons are available on the font toolbar. Each operates on either the destination or return address, depending on which one is selected. This toolbar can be displayed or hidden using the Options command.

Font Name

Font Size



Bold



Italics



Underline

Font Name

Use this combo box to select a font. Note that the whole font toolbar can be displayed or hidden using the Options command.

Font Size

Use this combo box to select the size of the font in points. Note that the whole font toolbar can be displayed or hidden using the Options command.



Bold

Use this button to change the font to bold. Note that the whole font toolbar can be displayed or hidden using the Options command.



Italic

Use this button to change the font to italics. Note that the whole font toolbar can be displayed or hidden using the Options command.



Underline

Use this button to underline the address. Note that the whole font toolbar can be displayed or hidden using the Options command.



KazStamp Shortcuts

General Shortcuts

- Use the main toolbar to work with files and the clipboard quickly.
- Use the font toolbar to change fonts quickly.
- Click the right mouse button on the graphic, return address, and address fields in the KazStamp main window to access commands for those objects.
- Open one of the last six files from the File menu.
- Store multiple addresses in one KazStamp file, separating each address with at least one blank line.

Shortcuts for Windows 3.1

- Double click a KazStamp file in the File Manager to start **KazStamp** and load the file automatically.
- Drag a text or KazStamp file from the File Manager and drop it in **KazStamp** to load the file.
- Use the File | Print command on a KazStamp file in File Manager to print an envelope. **Note that the default return address and default envelope size will be used to print the envelope.**

Shortcuts for Windows 95

- Double click a KazStamp file (or a shortcut to one) to start **KazStamp** and load the file automatically.
- Right click a KazStamp file (or a shortcut to one) and select the Open command to start **KazStamp** and load the file automatically.
- Drag a text or KazStamp file and drop it in **KazStamp** to load the file. **Note that you cannot successfully drag and drop a shortcut to a KazStamp file with the current version of **KazStamp** (see Release Notes).**
- Drag a KazStamp file (or a shortcut to one) to the printer icon to print an envelope. **Note that the default return address and default envelope size will be used to print the envelope.**
- Right click a KazStamp file (or a shortcut to one) and select the Print command to print an envelope. **Note that the default return address and default envelope size will be used to print the envelope.**

Related Topics
Release Notes



Post Office Bar Code

KazStamp automatically prints a bar code on the envelope which the post office uses to route your letter. The bar code represents the five or nine digit zip code that the letter is addressed to. This feature can be enabled or disabled using the [Print Postal Bar Code](#) command.



Return Address Graphic

KazStamp can print a graphic to the left of the return address. The graphic can be a bitmap (.BMP file extension), icon (.ICO file extension), or a Windows metafile (.WMF file extension).

To choose a graphic, use the Select Graphic command to select an existing graphic file. To print without a graphic, use the Clear Graphic command. To edit the graphic, use the Edit Graphic command.

You can use the Windows Paintbrush application, or any other graphic editor, to create a graphic file. For best results, use a monochrome graphic for a single color printer.

The size of the printed graphic can be specified with the Envelope Sizes command. However, icons cannot be resized.

See the Release Notes for information regarding problems printing graphics.



Release Notes

Windows 95 Shortcuts

In the current release, you cannot successfully drag a shortcut to a [KazStamp file](#) to the program to open it. (The program opens the shortcut file itself, not the file that the shortcut points to.) This problem is being investigated.

Problems Printing Graphics

If you have trouble printing, see the [Setup For Your Printer](#) section first. A few users have reported that they cannot print graphics on their particular printer. The documentation for the development tool used to develop [KazStamp](#) (Borland's Delphi) states that the routines used to print graphics may not work with all printer drivers. It may be resolved by using a different driver or a future release of [KazStamp](#). This problem is being investigated.

Related Topics

[Shortcuts](#)

[Setup For Your Printer](#)

Setup For Your Printer

Setup

Printers handle envelopes in a variety of ways. To configure **KazStamp** for your printer, try the following:

- 1) Determine whether envelopes are printed in landscape or portrait mode on your printer. Use the Print Setup command to specify the orientation in the print setup box.
- 2) Select an envelope size using the Envelope Sizes command. One of the choices to use is the *current printer setup*.
- 3) Use the Print Setup command to select the paper size for the printer. The paper size should not be smaller than the envelope size selected in Step 2 or some printing may get cut off.

If the *current printer setup* was selected in Step 2, then select an envelope from the list. Otherwise, you probably want normal letter sized (8½ x 11) paper selected.

- 4) Use the Print Test Envelope command to print an envelope with a border around it. The border should be the size of the envelope defined in Step 2 above, and should be printed around the outside of your envelope.

If the border is not printed around the outside of the envelope, you can use the border to adjust the parameters in Steps 1, 2, 3, and 5.

- 5) Adjust the indent parameter using the Envelope Sizes command to shift printing to the right. This may be necessary if envelopes don't feed along the left margin of your printer.

Troubleshooting

If your envelope looks good in the upper left corner but gets cut off along the right or bottom edge...

- ... check if the envelope size selected in Step 2 is correct.
- ... try increasing the paper size in Step 3 above.

If the printing looks shifted on the envelope...

- ... try adjusting the indent parameter in Step 4 above.

If the letters are sideways on the envelope...

- ... try changing the orientation in Step 1 above.

If you get a general protection fault in your graphics driver when printing an envelope with a graphic...

- ... try printing the envelope without the graphic.

Related Topics

Contacting Kaczynski Software

Release Notes



KazStamp Registration

There are two versions of **KazStamp** - evaluation and registered. (Use the About command from the Help menu to determine which version you have.) The evaluation version contains the exact same features found in the registered version. However, the evaluation version runs for a maximum of one hour at a time.

KazStamp is not free software. You may use the evaluation version of **KazStamp** for up to 21 days to evaluate the software. After those 21 days, your copy of the program must be registered with **Kaczynski Software** if you continue to use it.

To register **KazStamp**, print a registration form using the [Print Registration Form](#) command from the File menu. Fill out the form and send it to **Kaczynski Software** with your registration fee of \$5. Your registration entitles you to:

- the registration number to register your copy of **KazStamp**
- a disk with the most recent version of **KazStamp** if you do not already have it
- [technical support](#)
- Internet e-mail notifications of future releases
- upgrade to the next major version of **KazStamp** when available at no additional registration cost

Related Topics

[License Agreement](#)

[Technical Support](#)

[Disclaimer of Warranty](#)

File Menu Commands

New

Use this command to clear the address and create a new file for editing. If the file currently loaded into the address box has not been saved, you will be prompted to save the file before it is erased.

Open

Use this command to bring an existing KazStamp file or text file into the address box. If the file currently loaded into the address box has not been saved, you will be prompted to save the file before it is erased.

Save

Use this command to replace the contents of the current file.

Save As

Use this command to save the current file with a new name. You may wish to use the **KazStamp** extension of .ENV so that the file is recognized as a KazStamp file by Windows.

Close

Use this command to clear the address and create a new file for editing. If the file currently loaded into the address box has not been saved, you will be prompted to save the file before it is erased.

Print Envelope

Use this command to print an envelope as it is shown on the screen.

Print Test Envelope

Use this command to print an envelope with a border around the outside. This is useful when setting up **KazStamp** with your printer.

Print Setup

Use this command to modify the current printer settings.

Print Registration Form

Use this command to print a copy of the form used to register **KazStamp**.

Register

Use this command to register your copy of the program with the Registration Dialog Box.

Exit

Use this command to save the current configuration and leave **KazStamp**.

Edit Menu Commands

Cut

Use this command to remove the selected text and place it on the clipboard.

Copy

Use this command to copy the selected text to the clipboard.

Paste

Use this command to paste the clipboard contents into the address box at the current cursor position.

Delete

Use this command to delete the selected text from the address box without copying it to the clipboard.

Clear

Use this command to erase the address box without saving the contents. If you want to start a new file, use the [New command](#).

Select All

Use this command to select all text in the address box.

Options Menu Commands

Return Addresses

Use this command to display the Define Return Addresses screen to define the list of return addresses.

Envelope Sizes

Use this command to display the Define Envelope Sizes screen to define the size of the envelopes that you print on.

Fonts

Use this command to change the fonts for the destination or return address.

Select Graphic

Use this command to select the return address graphic that should be printed in the upper left corner of the envelope next to the return address.

Update Graphic

Use this command to refresh the return address graphic shown in the KazStamp main window from the graphic file on disk. This command may be needed after using the Edit Graphic command to edit the graphic.

Clear Graphic

Use this command to specify that a return address graphic should not be printed on the envelope.

Edit Graphic

Use this command to edit the graphic that will be printed on the envelope. After editing the return address graphic, you may wish to use the Update Graphic command to refresh the graphic in the KazStamp main window.

Show Hints

Check this item if a popup hint box should be shown for the item the cursor is pointing to.

Print Postal Bar Code

Check this item if you want the postal bar code printed on the envelope. Note that if this box is **not** checked, the postal bar code is not shown on the KazStamp main window.

Show Font Toolbar

Check this item to display the Font Toolbar.

Editing A Graphic

By default, the Windows Paintbrush is used to edit a graphic file. However, a different graphic editor can be specified in file KAZSTAMP.INI. Edit file KAZSTAMP.INI and change or add the following line under the {Options} section:

`GraphicEditor=pbrush.exe`

Replace file "pbrush.exe" with the executable file for your editor. Be sure to include the drive and directory path if necessary. Do not use any quotes.

Drag and Drop

An easy way to load any text file into [KazStamp](#) is to drag it from the File Manager (Windows 3.1) or the Explorer (Windows 95) and drop it into [KazStamp](#).

To drag and drop a file, first highlight the file in the File Manager or Explorer. Put the cursor over the file name, hold the mouse button down, and move the cursor over the [KazStamp](#) window or icon. Release the mouse button, and the file will be loaded into [KazStamp](#). If you had made any changes to the file previously loaded in [KazStamp](#), you will be asked if that file should be saved before the new one is loaded.

Note that the current version of [KazStamp](#) does not properly handle dragging and dropping a shortcut (see [Release Notes](#)).

[Related Topics](#)
[Open Command](#)
[KazStamp Files](#)
[Release Notes](#)

KazStamp Files

KazStamp opens and saves plain text files that are used by any text editor, such as the Windows Notepad. Although any file extension can be used, **KazStamp** uses a default file extension of ".ENV".

The benefit of saving files with the **KazStamp** file extension is that they can be opened directly into **KazStamp** by double clicking on the file name in either the File Manager (Windows 3.1), Program Manager (Windows 3.1) or Explorer (Windows 95).

Multiple addresses can be placed in one file. Single, multiple, or all addresses from a file can be printed at once using the options in the print dialog box.

Related Topics

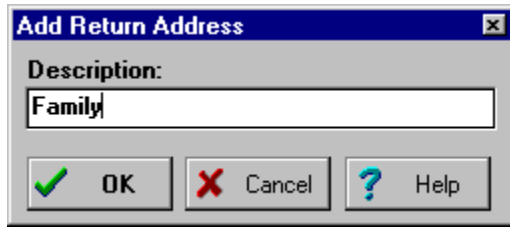
[Open Command](#)

[Save As Command](#)

[Shortcuts](#)

Rename Return Address

Use this dialog box to define or rename a return address. Click on any field below for more help.



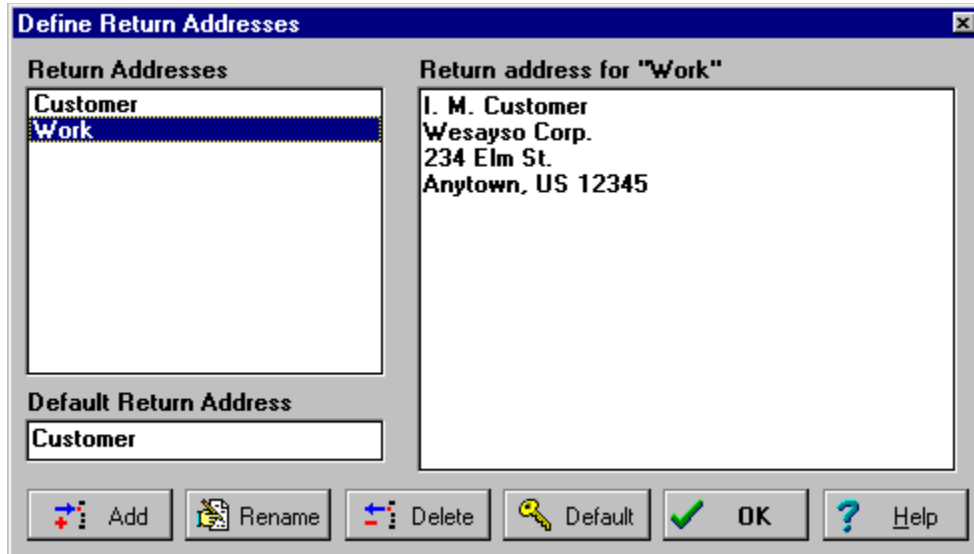
The image shows a standard Windows-style dialog box titled "Add Return Address". The title bar is blue with a close button (X) on the right. Below the title bar, the label "Description:" is positioned above a text input field. The text "Family" is entered into this field. At the bottom of the dialog, there are three buttons: "OK" with a green checkmark icon, "Cancel" with a red X icon, and "Help" with a blue question mark icon.

Return Address Description

Enter a description of the return address. This description is for your information only and is not printed on the envelope.

Define Return Addresses

Use this dialog box to define the return addresses that can be printed on an envelope. Click on any field below for more help.



Define Return Addresses

Return Addresses

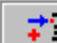
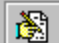



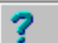
- Customer
- Work**

Default Return Address

Customer

Return address for "Work"

I. M. Customer
Wesayso Corp.
234 Elm St.
Anytown, US 12345

 Add  Rename  Delete  Default  OK  Help

Add New Return Address

Use this button to define a new return address.

Rename Return Address

Use this button to change the description of the highlighted return address in the list.

Delete Return Address

Use this button to remove the highlighted return address from the list.

Define Default Return Address

Use this button to define the highlighted return address in the list as the default. The default return address is selected when **KazStamp** starts.

Return Address List

This is the list of return addresses that can be printed on an envelope. Use the Add, Rename, and Delete buttons to modify the list.

Return Address Details

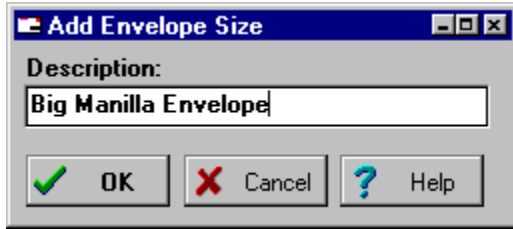
This is the actual return address that will be printed for the highlighted entry. Edit the return address directly in this box.

Default Return Address

This is the return address that will be selected when **KazStamp** starts. Use the Default button to select a different default return address.

Rename Envelope Size

Use this dialog box to define or rename an envelope type. Click on any field below for more help.

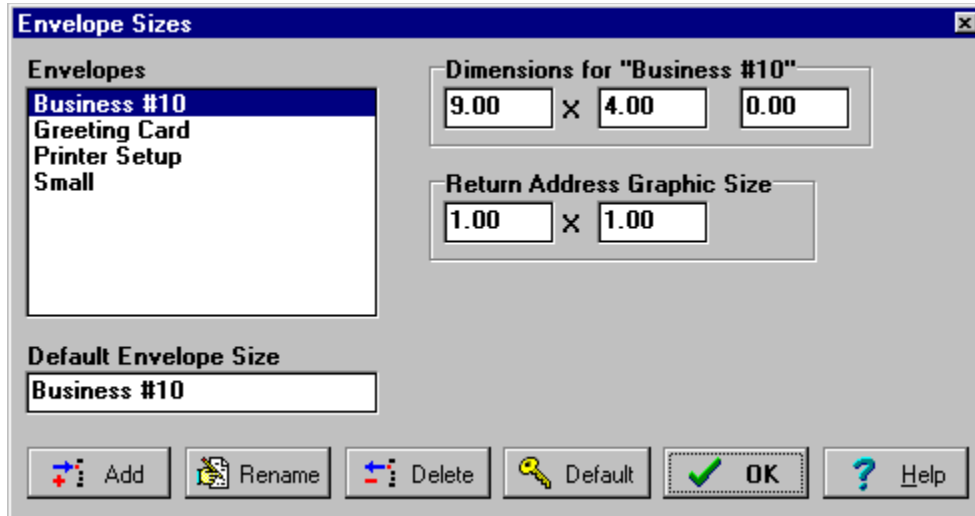


Envelope Size Description

Enter a description of the envelope type.

Define Envelope Sizes

Use this dialog box to define the size of the different envelopes that you want to print. Click on any field below for more help.



The dialog box titled "Envelope Sizes" features a list of envelope types on the left and configuration fields on the right. The "Business #10" envelope is selected. The dimensions for "Business #10" are set to 9.00 by 4.00, with a 0.00 offset. The return address graphic size is set to 1.00 by 1.00. The default envelope size is also set to "Business #10". The bottom of the dialog contains six buttons: "Add", "Rename", "Delete", "Default", "OK", and "Help".

Envelope Type	Dimensions (x)	Dimensions (y)	Offset
Business #10	9.00	4.00	0.00
Greeting Card			
Printer Setup			
Small			

Return Address Graphic Size: 1.00 x 1.00

Default Envelope Size: Business #10

Buttons: Add, Rename, Delete, Default, OK, Help

Add New Envelope Size

Use this button to add a new envelope to the list.

Rename Envelope Size

Use this button to change the description of the highlighted envelope in the list.

Delete Envelope Size

Use this button to remove the highlighted envelope from the list.

Define Default Envelope Size

Use this button to define the highlighted envelope in the list as the default. The default envelope is selected when **KazStamp** starts.

Envelope Size List

This is the list of envelopes that you can print on. Use the Add, Rename, and Delete buttons to modify the list. Some standard sizes (in inches) are:

Small Envelope	6½"	x	3½"
#10 Business Envelope	9"	x	4"
Greeting Card	7"	x	5"

The list will also contain an entry for **Printer Setup**. If this is selected, **KazStamp** uses the paper size defined in the Print Setup dialog box as the envelope dimensions.

Related Topics

[Setup For Your Printer](#)

Envelope Width

This field defines the width of the envelope in inches.

Envelope Height

This field defines the height of the envelope in inches.

Envelope Indent

This field defines the number of inches to indent printing on the envelope. This field may be necessary if envelopes do not feed on the left margin of your printer.

Graphic Width

This field defines the width of the Return Address Graphic in inches. This field is enabled only when a bitmap (.BMP file) or metafile (.WMF file) is selected with the Select Graphic. If this field is zero, then the graphic will be printed at its original size.

Graphic Height

This field defines the height of the Return Address Graphic in inches. This field is enabled only when a bitmap (.BMP file) or metafile (.WMF file) is selected with the Select Graphic. If this field is zero, then the graphic will be printed at its original size.

Default Envelope Size

This is the envelope size that will be selected when **KazStamp** starts. Use the Default button to select a different default.

